

SPORTS

With Roland M. Mulbah
Sportpromoter@gmail.com
0886714850/0777226638

Belgium-Portugal Clash Moved To Leiria After Terror Attacks

The two teams were due to meet at the King Baudouin Stadium in Brussels, but the match was called off due to security fears and has now been moved to the home of Uniao de Leiria.

Belgium and Portugal will still take part in their previously cancelled friendly after the two Football Associations agreed to relocate the match to Leiria in the aftermath of the terror attacks in Brussels.

The Belgian capital was attacked on Tuesday morning, with two explosions at Brussels airport and a third on the Metro claiming the lives of 34 people and injuring at least 200 more. The team's scheduled training session was cancelled as a result, with numerous squad members, most notably Vincent Kompany, paying their respects via social media.

The Red Devils were due to play Portugal at the King Baudouin Stadium in north-west Brussels next week, but initially cancelled the match on the advice of police, and have now agreed to move the fixture instead.

A statement read: "Given the dramatic events of yesterday, in these difficult times to allow mass events to take place safely and given the terror level 4 at national level, the game against Portugal will not take

place in Brussels next Tuesday.

"This was decided today in coordination with the authorities and the Portuguese Football Federation.

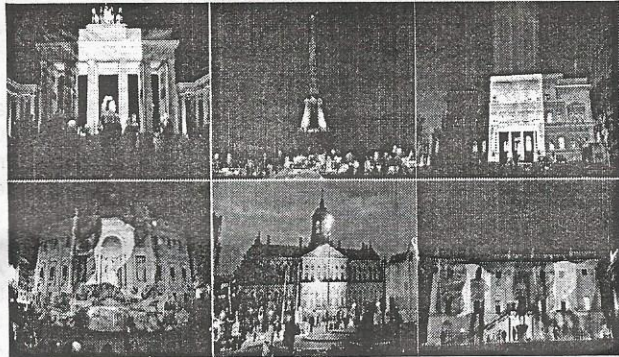
"The Board of Directors of the Belgian FA has, in agreement with the national coach and coaching staff, decided to accept the proposal of the Portuguese Football Federation to play this match in Leiria, on the same day and at the same time, Tuesday, March 29 at 20:45 (Belgian time). "The Belgian FA appreciates the availability, flexibility and solutions offered by the Portuguese Federation. The PPF expresses its full solidarity with the Belgian FA in this tough and emotional period.

"This afternoon, our Belgian Red Devils will train behind closed doors at the King Baudouin Stadium (16:30). This training session will not be open to the supporters and the press."

It is the second successive international friendly Belgium have had to cancel, with November's match against Spain also called off in the wake of the terror attacks on Paris.

Belgium skipper Kompany, who had remained in England due to injury, addressed his compatriots on Twitter on Tuesday and condemned the attacks.

He said: "Horried and revolted. Innocent people paying the price again. My thoughts are with the families of the victims. I wish for Brussels to act with dignity. We are all hurting, yet we must reject hate and its preachers. As hard as it may be."



Notice of Intent

Environmental & Social Impact Assessment for Liberia Electricity Corporation Proposed 66 kV Power Electric Transmission Line Project

The general public and all concerned or interested parties are hereby informed that Liberia Electricity Corporation (LEC) (the Applicant) has commissioned Earthtime to prepare an Environmental and Social Impact Assessment (ESIA) for the proposed:

- 22-kV distribution network in Paynesville and other parts of the northwest of Greater Monrovia all the way to Virginia
- The Substation at Stockton Creek, Gardnerville, Virginia, Kle and Bomi Hills
- 66kV lines linking the above substations between Bushrod Island and Tubmenburg.
- 33kV distribution lines from Kle to Robertsport and Bo Waterside.

Liberia Electricity Corporation (LEC), a 100% public enterprise owned by the Government of Liberia established in 1973 with the sole provision of producing electrical energy and distributing it throughout Liberia. This process will help the Applicant manage any associated environmental and socioeconomic issues in accordance with company policies, the laws of the Republic of Liberia including the Environmental Protection and Management Law, and international expectations.

In keeping with Section 11 of the Environmental Protection and Management Law of the Republic of Liberia (2003), Applicant's consultants are preparing an ESIA. The ESIA process will help the Applicant manage any associated environmental and socioeconomic issues in accordance with company policies, the laws of Liberia and international expectations.

In the process of identifying potential environmental and social impacts that may result from activities of the process, the Applicant's consultant (Earthtime Inc.) and Applicant will request and receive inputs from the public, including interested and affected parties. All persons having views, comments or concerns regarding the proposed project are encouraged to contact the Applicant's consultants as follows:

Applicant's email: tambamayah@yahoo.com
Applicant's Consultant email: whamdan@earthtimegroup.com

Contact number: +231-886511941, +231-888-300744

Your participation or input in this assessment will be highly appreciated in order to guide decision making relevant to the proposed project.

Notice of Intent

Environmental & Social Impact Assessment for Liberia Electricity Corporation Proposed 66 kV Power Electric Transmission Line Project

The Government of Liberia is working with the European Union under the Monrovia Consolidation of Electricity Transmission and Distribution Project to improve the operation and reliability of the T & D Power System of Liberia and to increase the access to electricity in and around Monrovia. The project has two key components:

1. Greater Monrovia Transmission Reinforcement – support for the reinforcement needed in 66 kV transmission network till 2030;
2. Distribution extension at 22 kV and Consumer Connection 0.4 kV - support for the connection of a total of 58,180 customers and 23 large consumers with an approximated total power 18,050 kVA.

The general public and all concerned or interested parties are hereby informed that Liberia Electricity Corporation (LEC) (the Applicant) has commissioned TSC Engineering and Construction Consultant to prepare an Environmental and Social Impact Assessment (ESIA) for the above mentioned components.

Liberia Electricity Corporation (LEC), a 100% public enterprise owned by the Government of Liberia established in 1973 with the sole provision of producing electrical energy and distributing it throughout Liberia. This process will help the Applicant manage any associated environmental and socioeconomic issues in accordance with company policies, the laws of the Republic of Liberia including the Environmental Protection and Management Law, and international expectations.

In keeping with Section 11 of the Environmental Protection and Management Law of the Republic of Liberia (2003), Applicant's consultants are preparing an ESIA. The ESIA process will help the Applicant manage any associated environmental and socioeconomic issues in accordance with company policies, the laws of Liberia and international expectations.

In the process of identifying potential environmental and social impacts that may result from activities of the process, the Applicant's consultant (Earthtime Inc.) and Applicant will request and receive inputs from the public, including interested and affected parties. All persons having views, comments or concerns regarding the proposed project are encouraged to contact the Applicant's consultants as follows:

Applicant's email: tambamayah@yahoo.com
Applicant's Consultant email: contact@tristarliberia.com

Contact number: +231-886511941, +231-888-300744

Your participation or input in this assessment will be highly appreciated in order to guide decision making relevant to the proposed project.

Notice of Intent

Environmental & Social Impact Assessment for Rural and Renewable Energy Agency Proposed Kaiha 2 Hydropower Project

The Rural and Renewable Energy Agency (RREA) is proposing to develop a mini hydropower project on the Kaiha River in Kolahun District. The project is referred to as Kaiha 2 and is intended to provide affordable electricity supply to rural and urban communities in Lofa County. The general public and all concerned or interested parties are hereby informed that Rural and Renewable Energy Agency (RREA) (the Applicant) has commissioned Earthtime and Multiconsult to prepare an Environmental and Social Impact Assessment (ESIA) for the proposed mini hydropower plant located 45 km south of Kolahun town in northern Liberia.

In keeping with Section 11 of the Environmental Protection and Management Law of the Republic of Liberia (2003), Applicant's consultants are preparing an ESIA. The ESIA process will help the Applicant manage any associated environmental and socioeconomic issues in accordance with company policies, the laws of Liberia and international expectations.

In the process of identifying potential environmental and social impacts that may result from activities of the project, the Applicant's consultant and Applicant will request and receive inputs from the public, including interested and affected parties. A copy of the Project Brief is available at the Environmental Protection Agency (EPA). All persons having views, comments or concerns regarding the proposed project are encouraged to contact the Applicant's consultants as follows:

Applicant's email: [Augustus V. Goanue <gusgoanue@yahoo.com>](mailto:Augustus.V.Goanue@gusgoanue@yahoo.com)
Applicant's Consultant email: whamdan@earthtimegroup.com

Contact Number: +231888300744

Your participation or input in this assessment will be highly appreciated in order to guide decision making relevant to the proposed project.